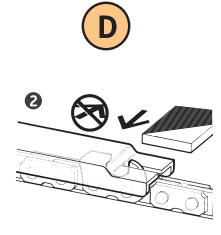
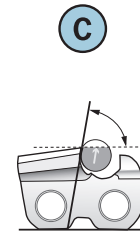
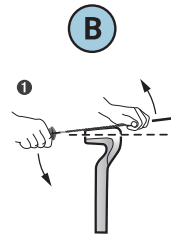
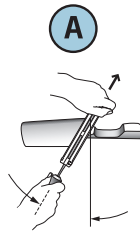
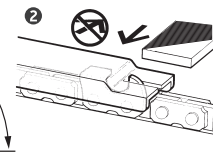
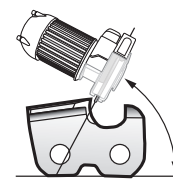
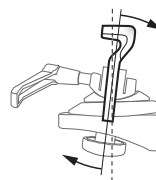
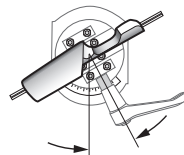


## Filing Angles



1/4"	25AP	5/32"	30°	10°	85°	.025"	
.325" Low Profile	80TXL	5/32"	25°	10°	70°	.025"	
3/8" Low Profile™	90PX, <i>90SG</i>	4.5 mm	30°	0°	75°	.025"	
	91P, 91PX, 91PXL	5/32"	30°	0°	80°	.025"	
	91VXL, M91VXL	5/32"	30°	0°	80°	.025"	
	<i>95VPX</i>	3/16"	30°	10°	70°	.025"	
.325"	20, 21, 22BPX, M20, M21, M22BPX	3/16"	30°	10°	70°	.025"	
	95TXL	3/16"	30°	10°	70°	.025"	
	20, 21, 22LPX, LGX, <i>M20, M21, M22LPX</i>	3/16"	25°	10°	60°	.025"	
3/8"	72, 73, 75V	7/32"	25°	10°	60°	.025"	
	72, 75CJ, CK, CL	ⓑ	45°	45°	90°	.025"	
	72APX, 72, 73, 75DPX, M72, M73, M75DPX	7/32"	30°	10°	80°	.025"	
	72, 73, 75EXL, EXJ, <i>LGX, JGX</i> , LPX, JPX	7/32"	25°	10°	60°	.025"	
	<i>M72, M73, M75LPX</i>	7/32"	25°	10°	60°	.025"	
	72, 73, 75RD	7/32"	10°	10°	75°	.025"	
	.404"	27X, 27AX	7/32"	30°	10°	65°	.030"
		27R, RX, <i>RA</i>	7/32"	10°	10°	75°	.030"
58CJ, CL, 59CJ, CK, CL		ⓑ	45°	45°	85°	.025"	
58, 59J, L		7/32"	25°	10°	60°	.025"	
68LX, JX		7/32"	25°	10°	60°	.030"	
	68CJ, CL	ⓑ	45°	45°	—	.030"	

## Grinding Angles



1/4"	25AP	1/8"	30°	10°	55°	.025"	
.325" Low Profile	80TXL	1/8"	25°	10°	70°	.025"	
3/8" Low Profile	90PX, <i>90SG</i>	1/8"	30°	0°	55°	.025"	
	91P, 91PX, 91PXL	1/8"	30°	0°	55°	.025"	
	91VXL, M91VXL	1/8"	30°	0°	55°	.025"	
	<i>95VPX</i>	3/16"	30°	10°	55°	.025"	
.325"	20, 21, 22BPX, M20, M21, M22BPX	3/16"	30°	10°	55°	.025"	
	95TXL	3/16"	30°	10°	55°	.025"	
	20, 21, 22LPX, LGX, <i>M20, M21, M22LPX</i>	3/16"	25°	10°	55°	.025"	
3/8"	72, 73, 75V	3/16"	25°	10°	55°	.025"	
	72, 75CJ, CK, CL	—	15°	45°	—	.025"	
	72APX, 72, 73, 75DPX, M72, M73, M75DPX	3/16"	30°	10°	55°	.025"	
	72, 73, 75EXL, EXJ, <i>LGX, JGX</i> , LPX, JPX	3/16"	25°	10°	55°	.025"	
	<i>M72, M73, M75LPX</i>	3/16"	25°	10°	55°	.025"	
	72, 73, 75RD	3/16"	10°	10°	50°	.025"	
	.404"	27X, 27AX	3/16"	30°	10°	55°	.030"
		27R, RX, <i>RA</i>	3/16"	10°	10°	50°	.030"
58CJ, CL, 59CJ, CK, CL		—	15°	45°	—	.025"	
58, 59J, L		3/16"	25°	10°	55°	.025"	
68LX, JX		3/16"	25°	10°	55°	.030"	
	68CJ, CL	—	15°	45°	—	.030"	

① When using an Oregon® file guide, ALWAYS hold it level, 0-degrees flat on the Top Plate.

② Oregon Depth Gauge File (flat file) P/N 12211 must be purchased separately for use with Oregon Depth Gauge Tools.

③ Square Ground Filing: A 15° cutting edge is the result when the file is held at 45° top-plate angle and 45° down angle.